

M5 Hand-carried Color Doppler Diagnostic Ultrasound System

Good Things Come in Small Packages

The launch of Mindray's new laptop-size ultrasound systems will bring along users worldwide a new era of full functional hand carried ultrasound system.

Ever since its foundation, Mindray has been making best effort in promoting medical technology innovations. In ultrasound, our persistent customer-oriented technologies have offered a family of versatile ultrasound products with extraordinary performance to suit a broad range of clinical applications.

Being an innovator in sonography and patient care solutions, we constantly endeavor to consummate our systems and to realize high-quality examination wherever and whenever necessary. The future of ultrasound appears to be even more exciting with easy-to-transport systems.

Ultrasound healthcare is entering a new age, and so will you.



M5 Hand-carried Color Doppler Diagnostic Ultrasound System

DISTRIBUTOR:



MINDRAY is a trademark of Shenzhen Mindray Bio-Medical Electronics Co., Ltd. Specifications subject to changes without prior notice.
© 2010 Shenzhen Mindray Bio-Medical Electronics Co., Ltd. All rights reserved.
P/N: ENG-M5-210285x8-20100329

mindray

Mindray is listed on the NYSE under the symbol "MR"
Mindray Building, Keji 12th Road South, High-tech Industrial Park,
Nanshan, Shenzhen 518057, P.R. China
Tel: +86 755 26582888 Fax: +86 755 26582680
E-mail: intl-market@mindray.com Website: www.mindray.com

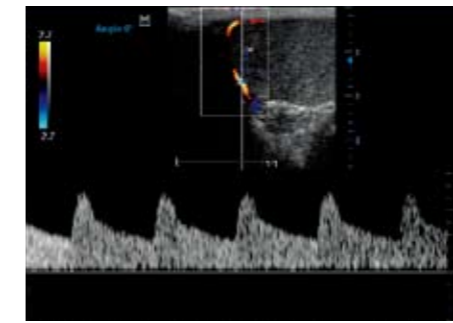
mindray
healthcare within reach

Rely on the high performance

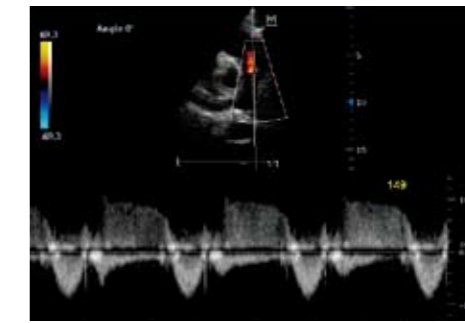
Mobility and reliability, that's the M5 from Mindray. Weighing approximately 6 Kg, M5 delivers a full range of functionality and solid diagnostic confidence. Mindray is committed to providing best-in-class image quality and easy optimization tools. Thanks to Mindray's own revolutionary technologies, the M5 adopts brilliant color imaging capability and excellent 2D performance.

The iClear™ function is a new breakthrough in speckle reduction, which helps to visualize more tissue subtleties, reduce operator dependence and increase patient throughput. The iBeam™ function which is a spatial compounding imaging technology, increases spatial resolution without any compromise in frame rate, thus collecting more useful information to generate higher quality images.

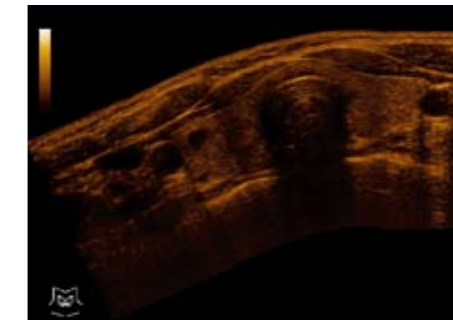
- Complete imaging modes: 2D with THI, M, PW (with HPRF), Color, Power and DirPower.
- iScape™ View (panoramic imaging) and trapezoidal imaging allow a wider field of view; meanwhile, CW Doppler is capable of capturing low and high velocity jets to support a comprehensive cardiac study.
- With the mobile trolley, you can increase the system's flexibility even more with access to multi-transducer connectors as well as an DVD recorder and printer.



Testicle flow



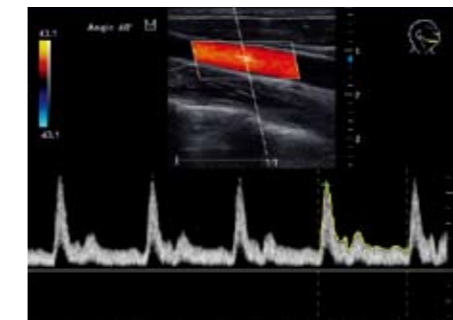
Pulmonary regurgitation



Panoramic imaging of thyroid



Brachial plexus between ASM and MSM



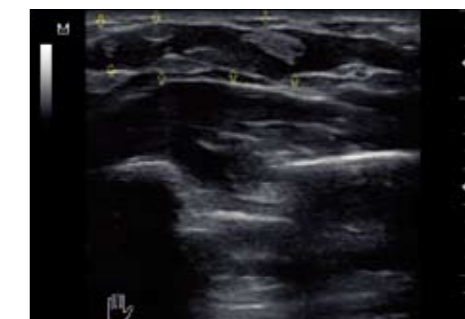
Carotid artery with PW auto trace



Liver parenchyma



Kidney flow



Tendon in carpal canal

The implementation of iClear™ realizes aggressive suppression of speckle patterns, bringing you a clear vision of ultrasound images with benefits in the following aspects:

- Noise: significantly reduced speckle noise for better tissue differentiation
- Edge: enhanced margin definition for increased diagnostic accuracy
- Contrast: improved contrast resolution without compromising spatial resolution



The M5 is ergonomically designed as an easy-to-use machine with speed and accuracy for operators of different experience levels. The M5 features a high-resolution 15-inch TFT monitor of wide view of angle and magnesium alloy shell for better anti-shock capability. With a home-based panel and operator's navigation, the M5 is always ready to perform efficient and reliable examinations.

M5 Hand-carried Color Doppler Diagnostic Ultrasound System

Bring you an easy scanning

Attributed to the powerful user-defined presets, you can customize your system for any type of exam and adopt your own preference for specific exam packages. User-defined scanning programs include image parameters, exam modes, measurement items, calculation formulae, and etc. The fast information management platform saves every second on archive storage in critical-care situations and allows after-scanning analysis as well.

Fast optimization of the image quality with one button iTouch™ (intelligent image optimization) for better contrast and homogeneity, IP (image processing) for efficient use of balanced parameter groups, and soft keys for direct on-screen parameter adjustment.



Easy portability



Convertible into a cart-based machine



Expanding transducer connectors on the cart



A variety of transducers



iDock™ for maximum input/output connectivity



User-centric control panel

Take M5 with you anytime and anywhere

Uniquely, with its small size, M5 is easy to transport, boosting its application to more occasions such as emergency medicine, gymnasiums, operation rooms as well as in the field. Benefiting from a fast, 42-second boot up time, rechargeable batteries and light-weight multi-frequency transducers, the M5 is ready for scanning wherever and whenever necessary.

Easy storage, fast review and efficient management of patient data can be realized by the intelligent information management platform iStation™ with storage capacity of 160G HDD, the shortcuts and the user-defined keys. Patient archive including both data and images can be post-processed for future analysis. Moreover, the M5 system integrates seamless network and plug-and-play connectivity such as DICOM, USB ports, DVD-R/W, DVD recorder and so on.

Practical accessories wherever and whenever you need your M5.

